



# JOB AID HAZARD AWARENESS INFO

## ELECTRICAL PANELS AND SOURCES

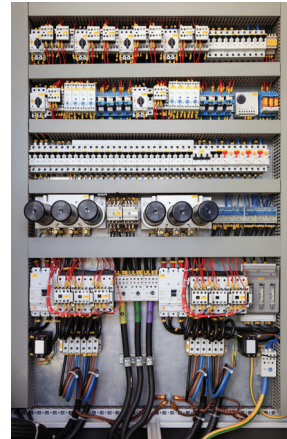
Electrical sources provide power to industrial equipment. Electrical equipment refers to the components of the electrical distribution system such as transformers, fuses, electrical panels and switchboards, distribution boards, circuit breakers, disconnects and generators.

### Hazards Involved/Arise

- Electrical shock which can cause burns, stopped heart, falls
- Arc flash

### People Affected

- Maintenance
- Service technicians
- Electricians
- Electrical designers



### Existing Controls

- Restricted access to qualified personnel only
- Determine voltage to determine level of controls required
- Closed panels
- Clean work area of dust and debris accumulation on equipment
- Touch-safe components
- Engineering controls
- Hazardous energy control program (Lock-out/Tag-out)
- Risk assessments and live work procedures
- Personal Protective Equipment (PPE) and insulated tools rated for use
- Administrative controls, policy, procedures and supervision
- Review compliance with Ontario and Municipal codes
- Proper training and confirmation of understanding

This material, created by WSPS Volunteers as ancillary information, is suitable for general guidance only and is not a replacement for health and safety training, instruction, or procedures. No warranty, guarantee, or representation is made by WSPS as to the absolute correctness or sufficiency of this content. Under no circumstances shall WSPS, its affiliates, or any of its respective partners, officers, directors, employees, agents or representatives be liable for any direct, indirect, special or consequential damages, lost revenues or profits, or any other claim arising from or in connection with this material.

Content developed by WSPS Advisory Committees

375-BBT-016-IGDO| REVISED JUNE 2017

For more information, contact  
Workplace Safety & Prevention Services

WSPS.CA 1 877 494 WSPS (9777)

CONNECT  
WITH US



Workplace Safety  
& Prevention Services®